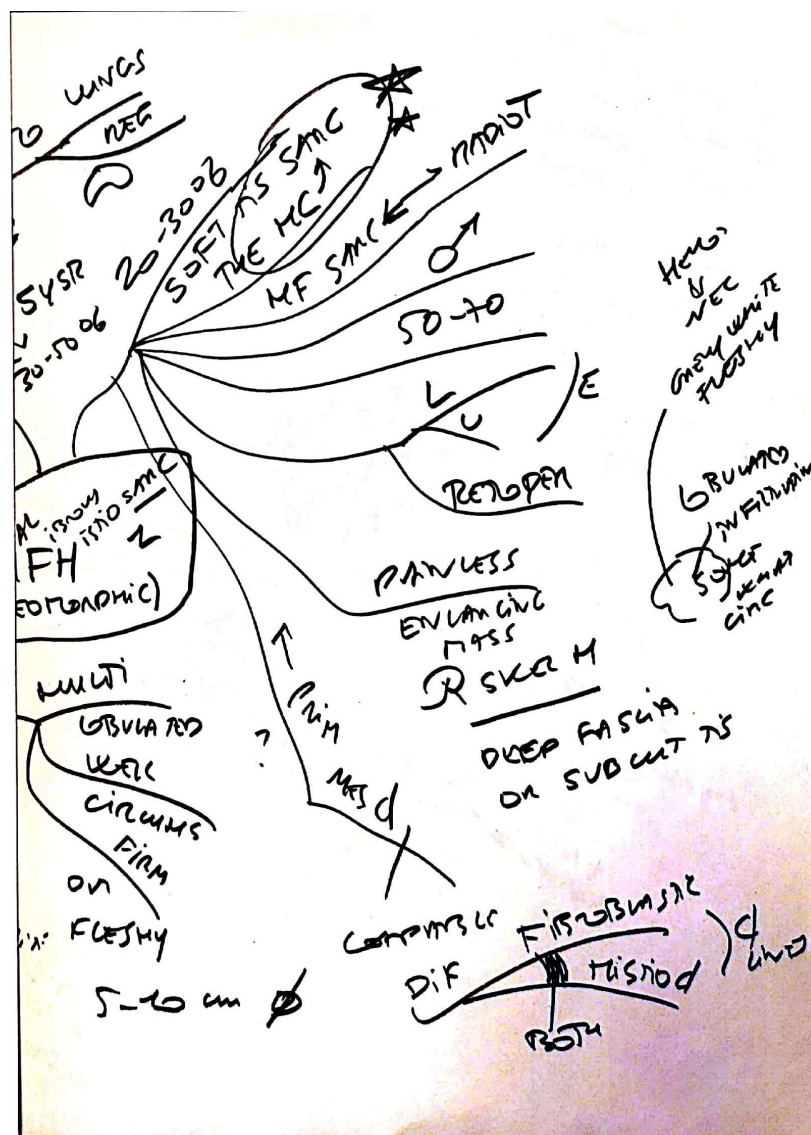
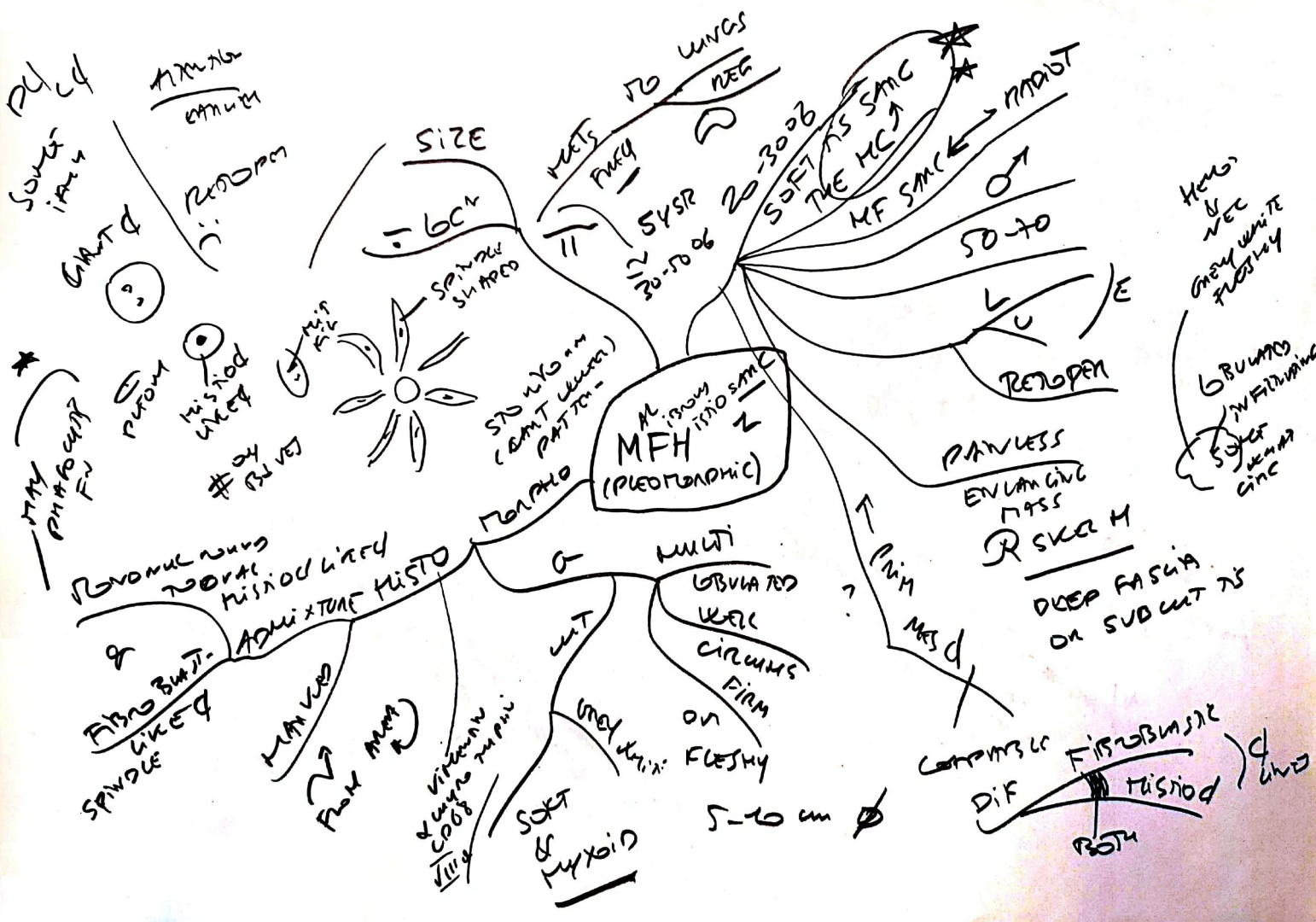
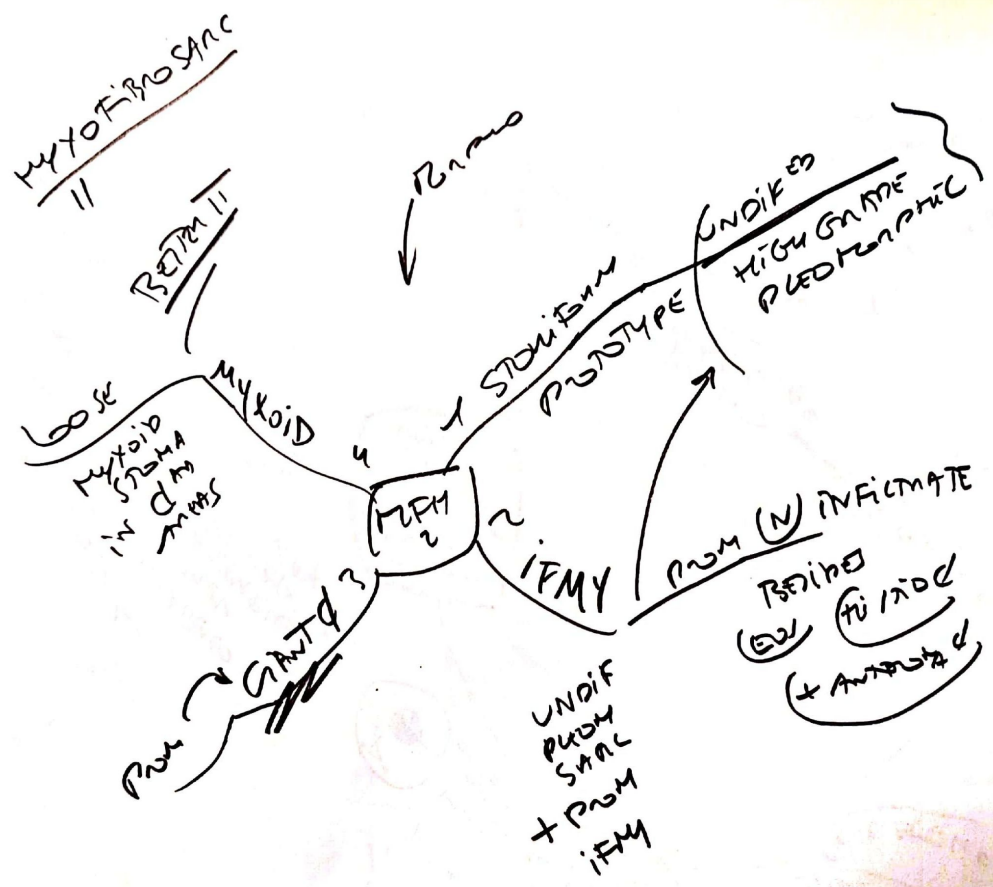


~~BREAST SOFT TISSUE TUMORS~~ ~~M. FROM TISSUE SMC~~ ~~HOMOGENEOUS (FH)~~ ~~HOMOGENEOUS (FH)~~ ~~BUBBLES INFILTRATING SOFT TISSUE~~ ~~HOMOGENEOUS REC GREY WHITE FLESHY~~ ~~FIBROBLASTIC TISSUE~~ ~~DIF~~ ~~BOTH~~ ~~C~~

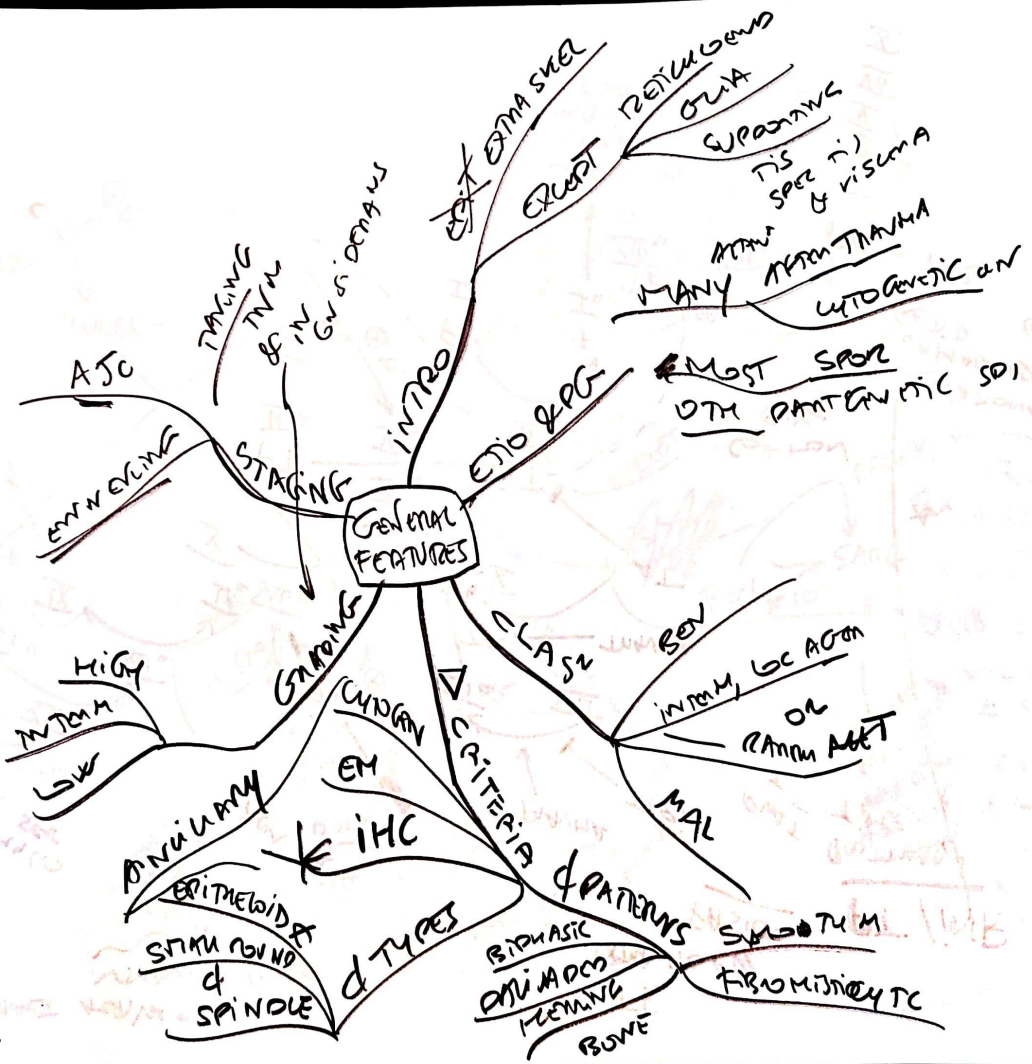
FROM SOFT TISSUE TUM

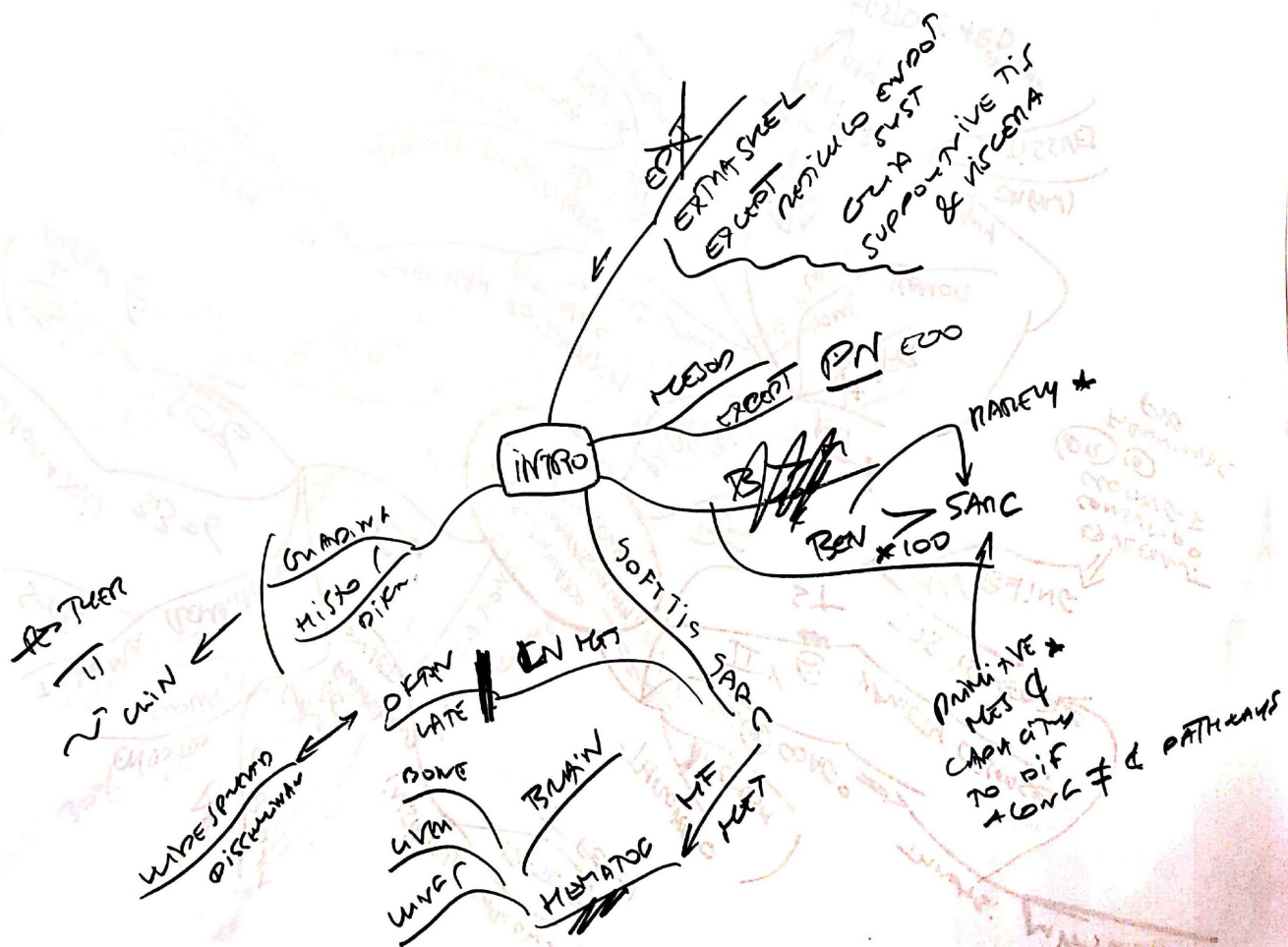






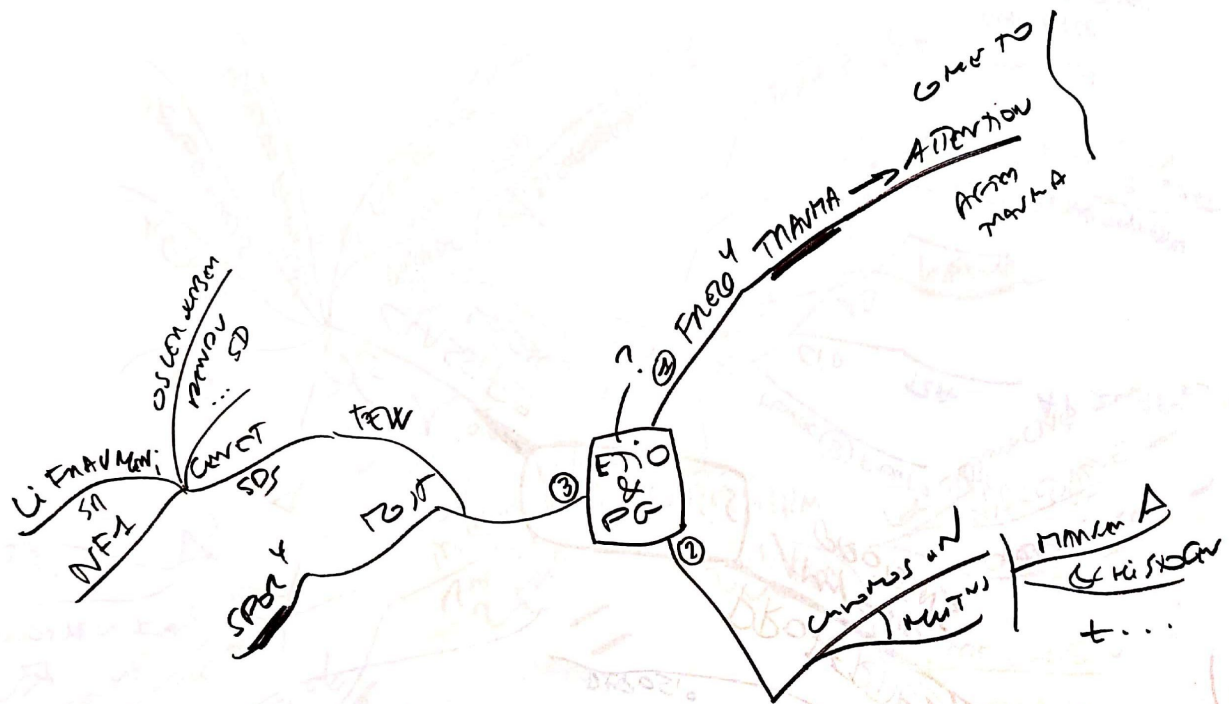
38.7



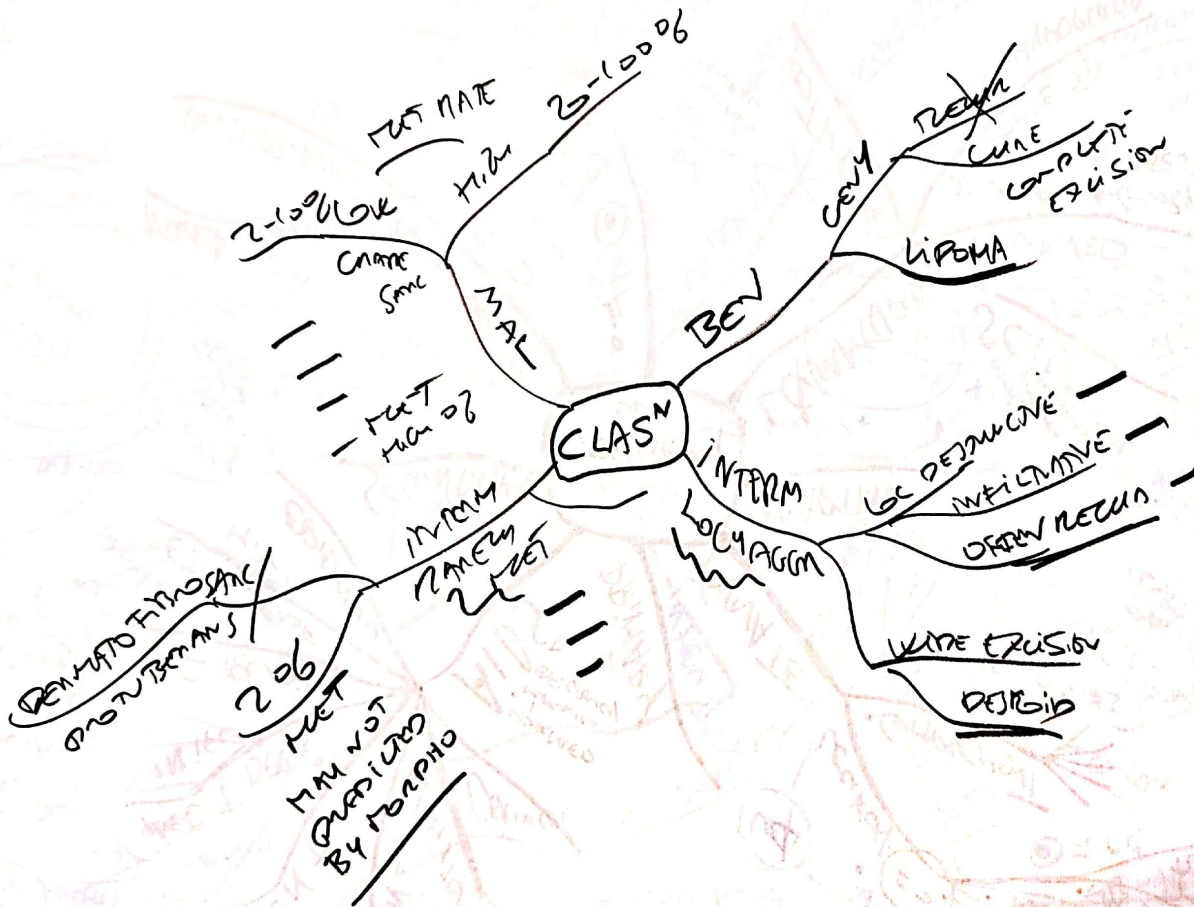


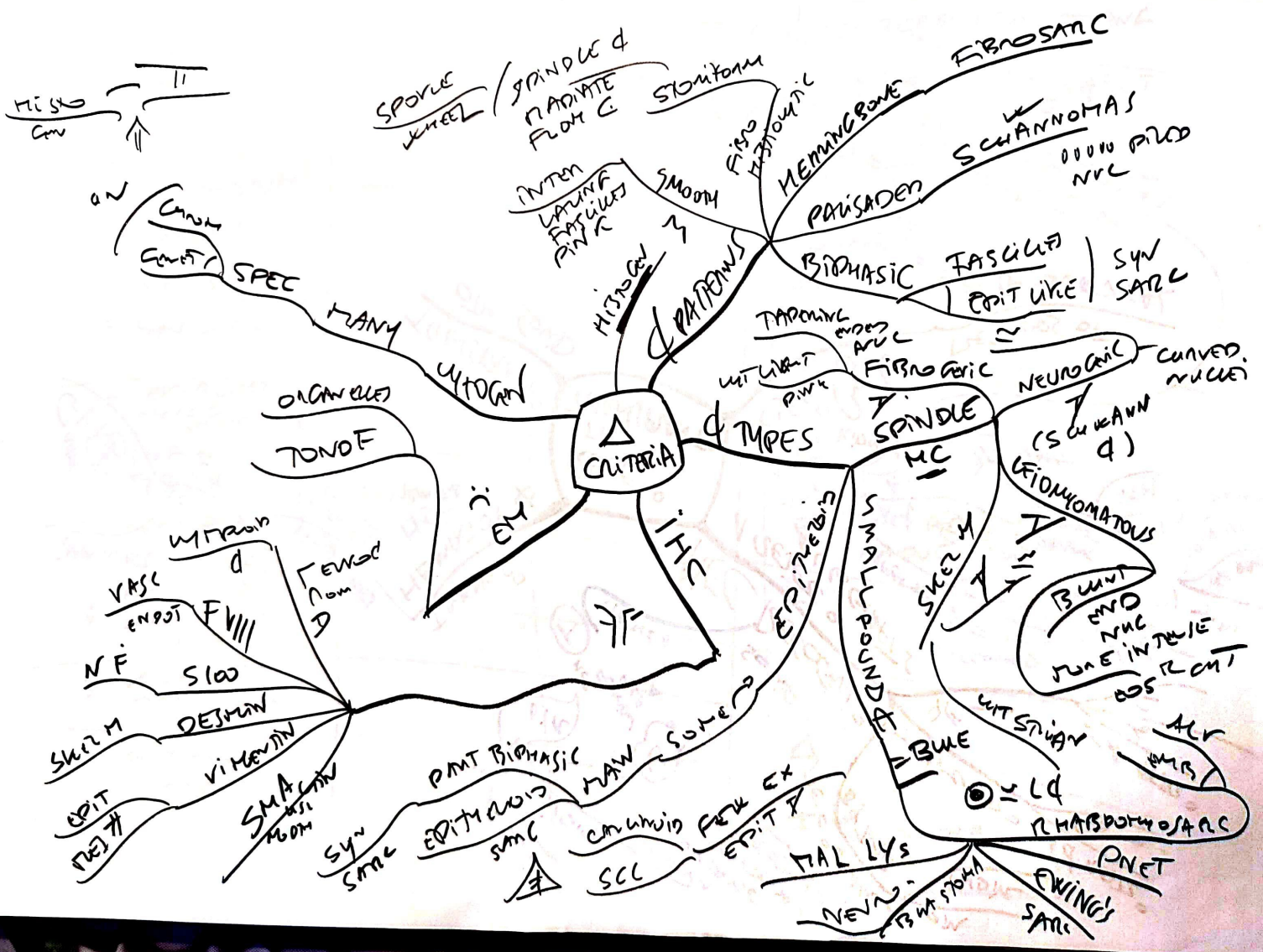
1887 (B.F.)



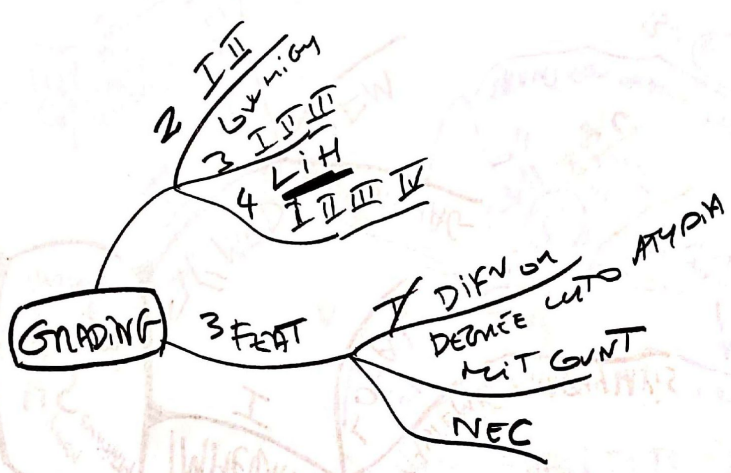


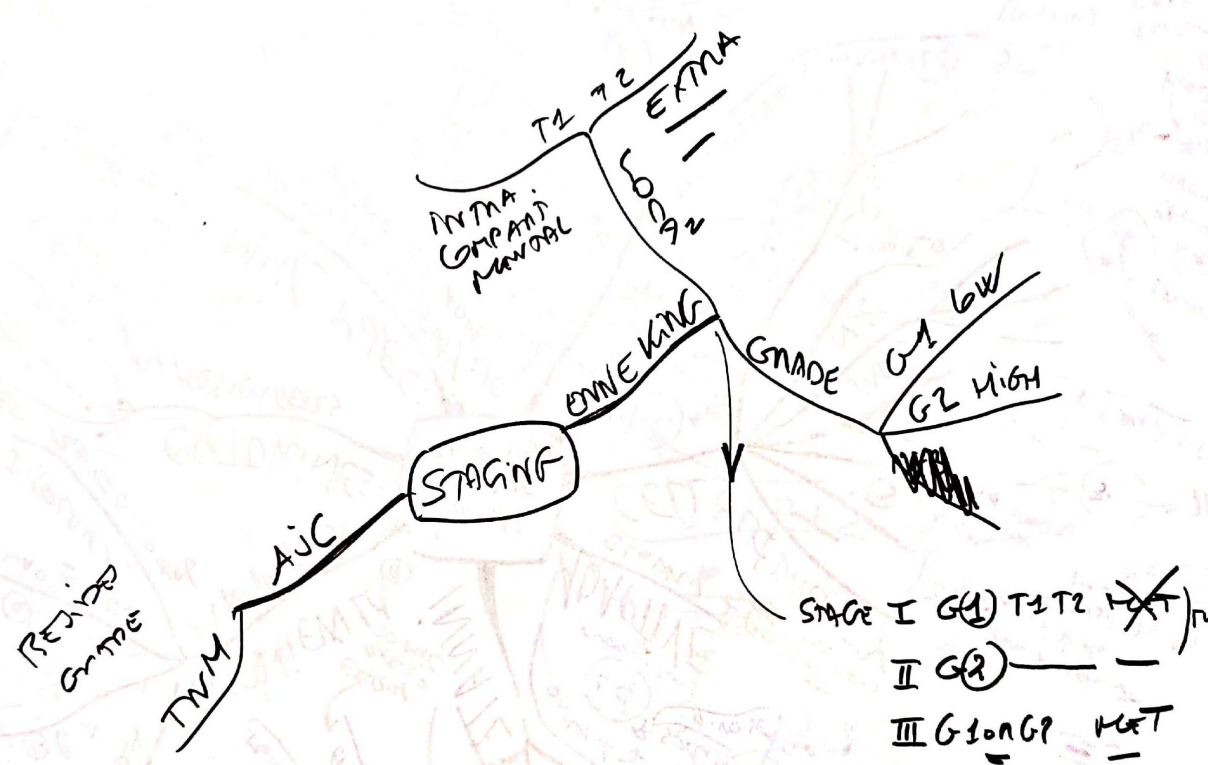






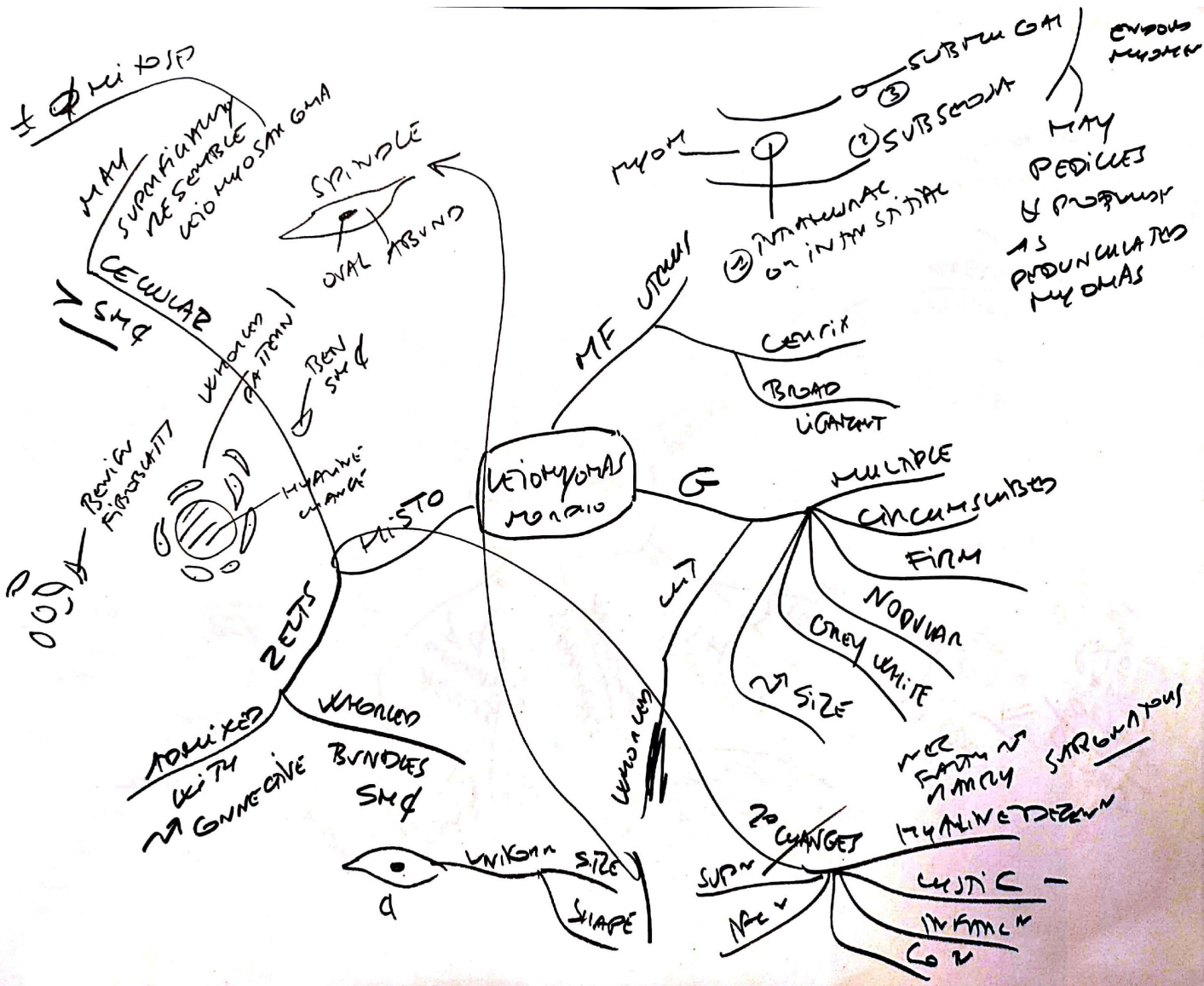
	CYTOKIN ACT	MARKER —	REASON FOR TESTING
1 EMBRYO/SAR (PNET)	-E(14;22)(q24;q44)	EXON-FLUORINW GENE	≠ FROM OTH SRCT
2 ALVEOLAR RIMBIO/SAR	— —		— U II — V II
3 MIXED/ROUND & LIPOSAR			Δ
4 SYN SAR			BIPHASIC ≠ PNET
5 EXTRA SKELETAL MYOBLASTIC SAR			Δ
6 INFANTILE FIBROSAR	TWISMER		≠ FINE AGAR ADULT
7 PLEOMORPHIC FIBROSAR PROTEINOMAS	MARK		Δ
8 DEDIFFERENTIATED SAR ROUND CT	X		POOR TI
9 ALV SOFT PART SAR			Δ
10 CLEAR C SAR			≠ WT MELANOMA



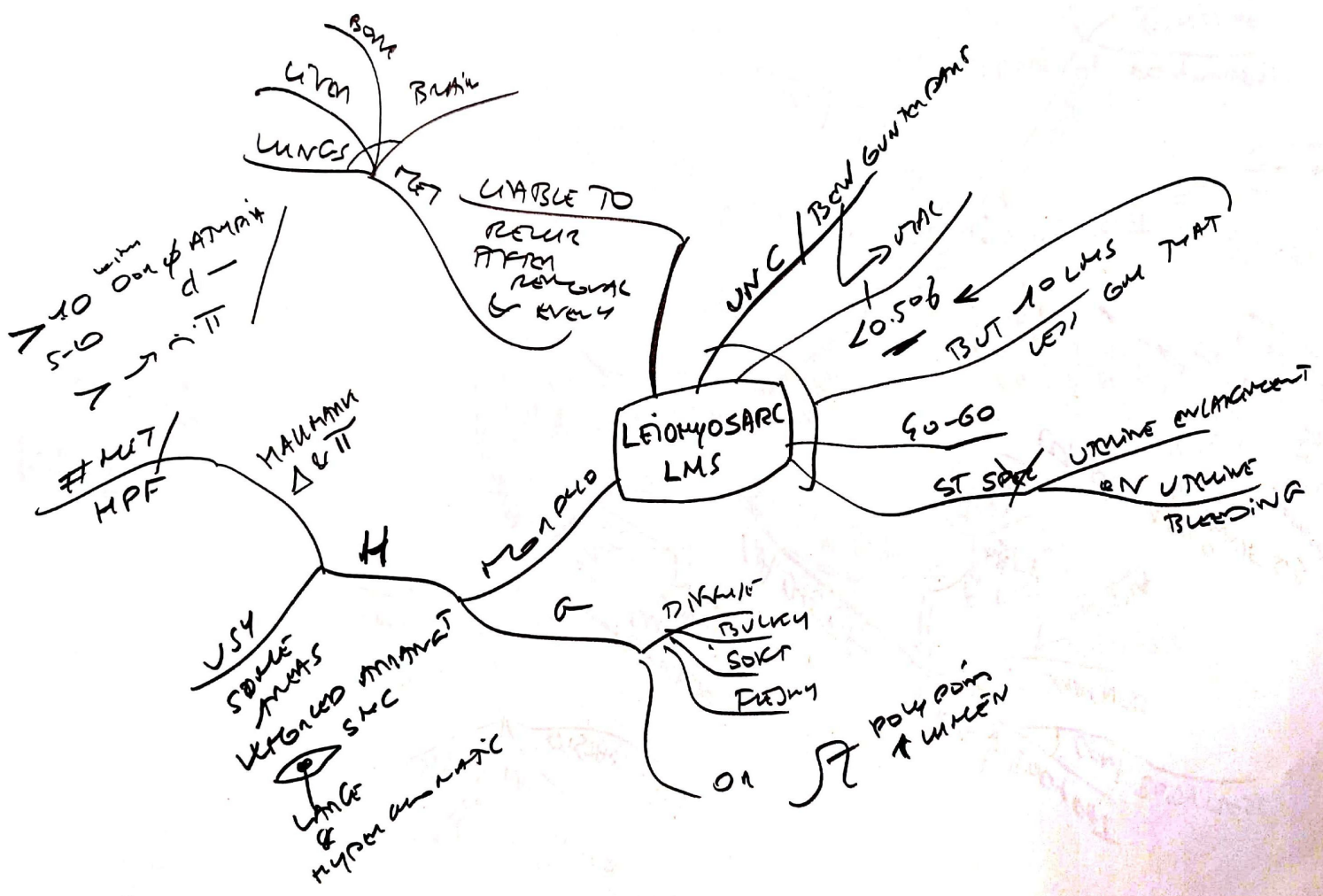


ENDOM  
MYOM

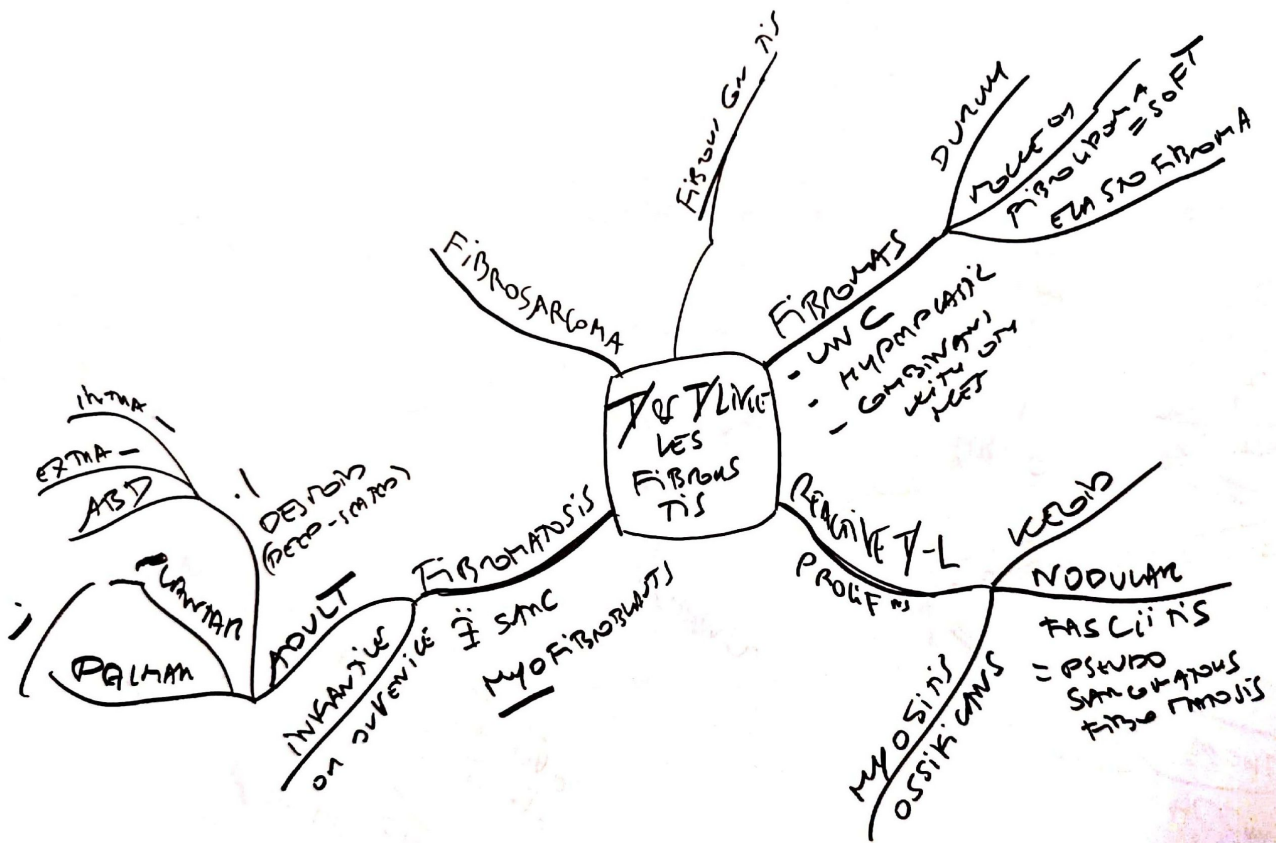


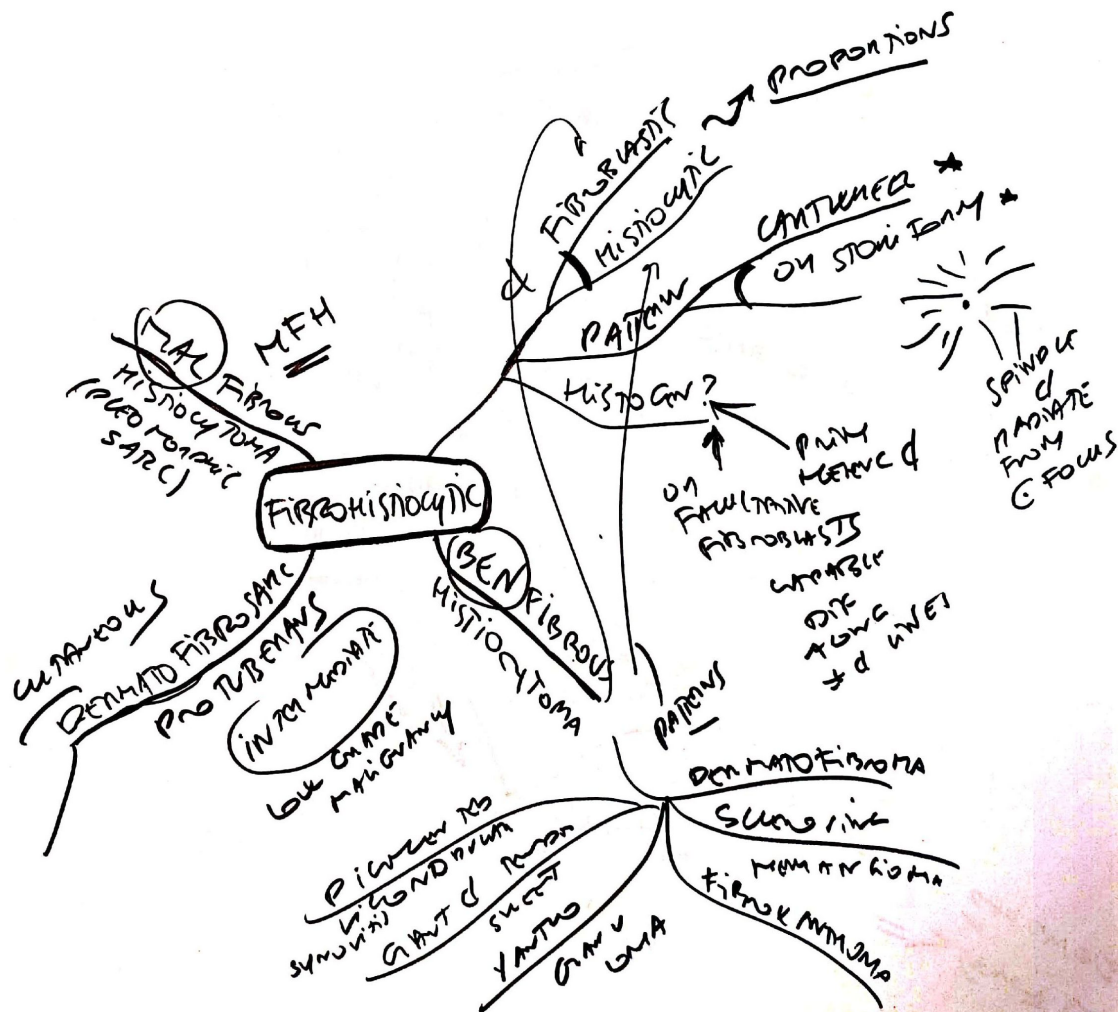


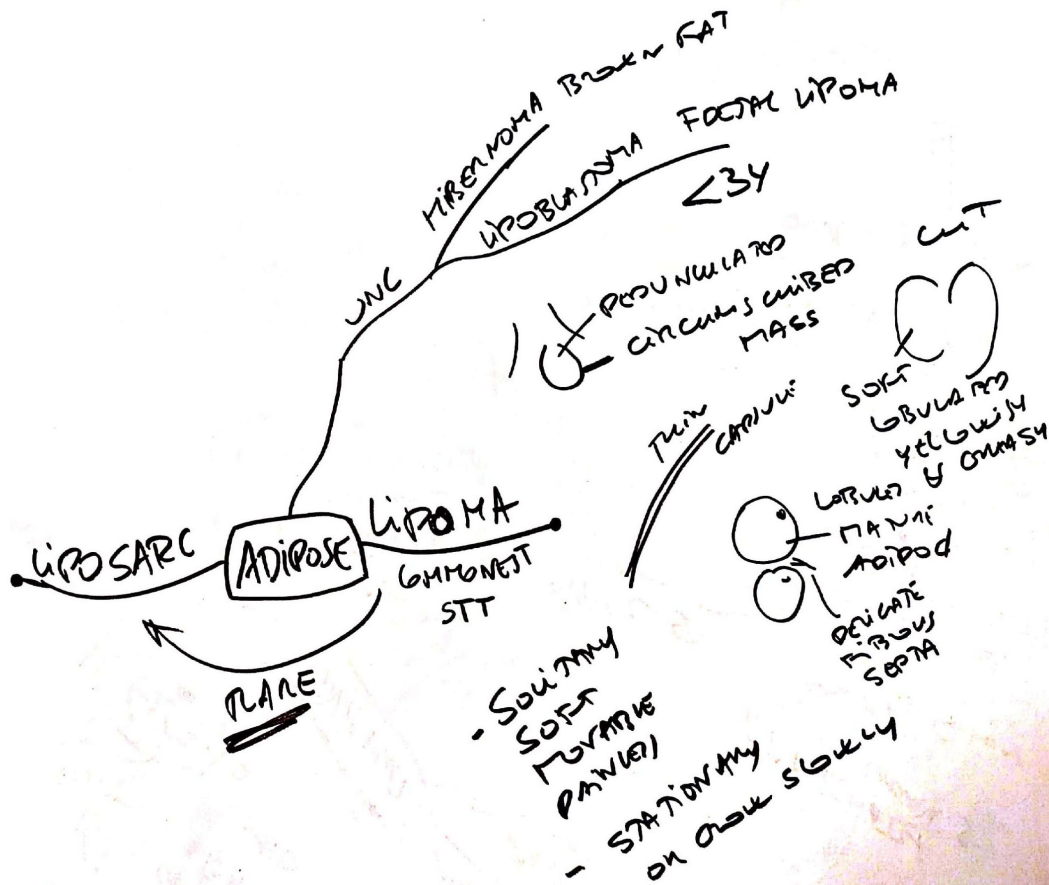
ENDOM  
HYO ME













PROY

↳ MYOBLASTS  
CUM MCG

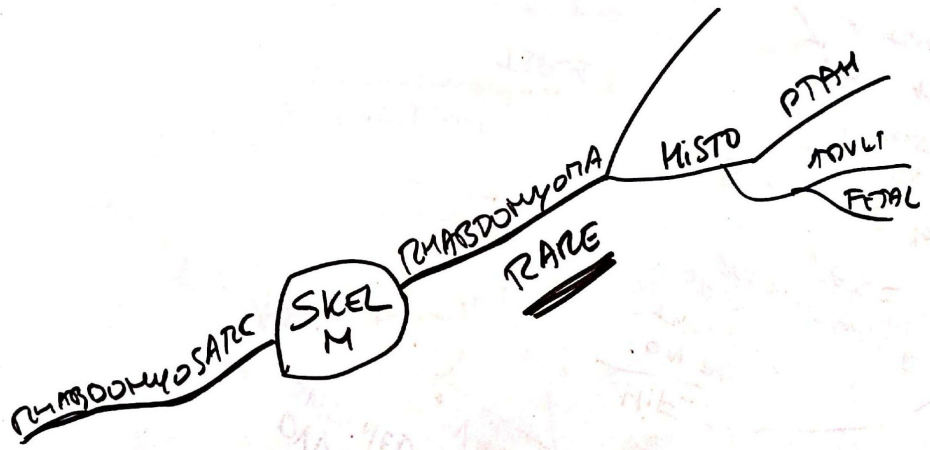
LIPID RUMIT (BIZITUNG NUCLEI)

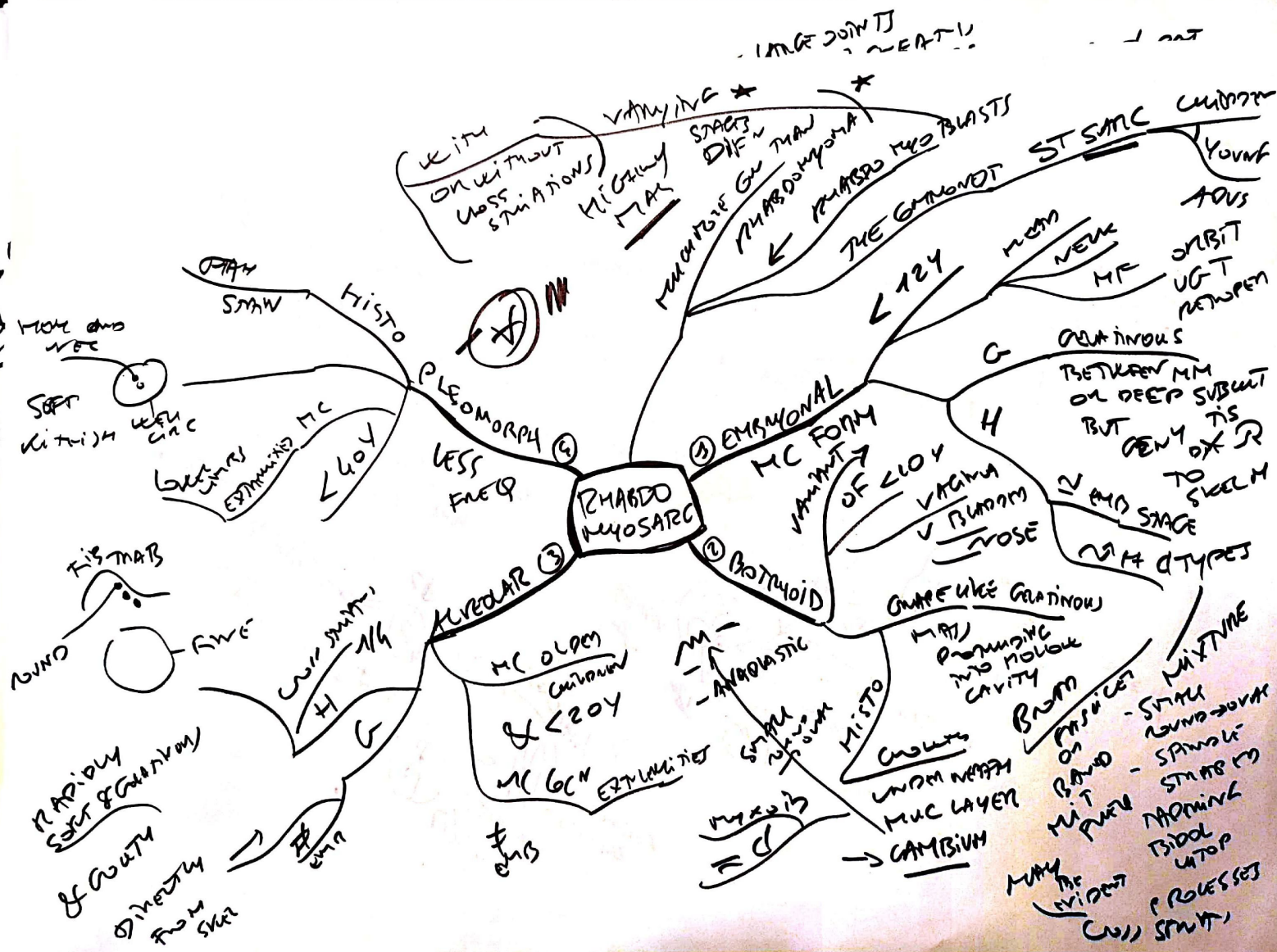
INDENTED  
NUCLEI

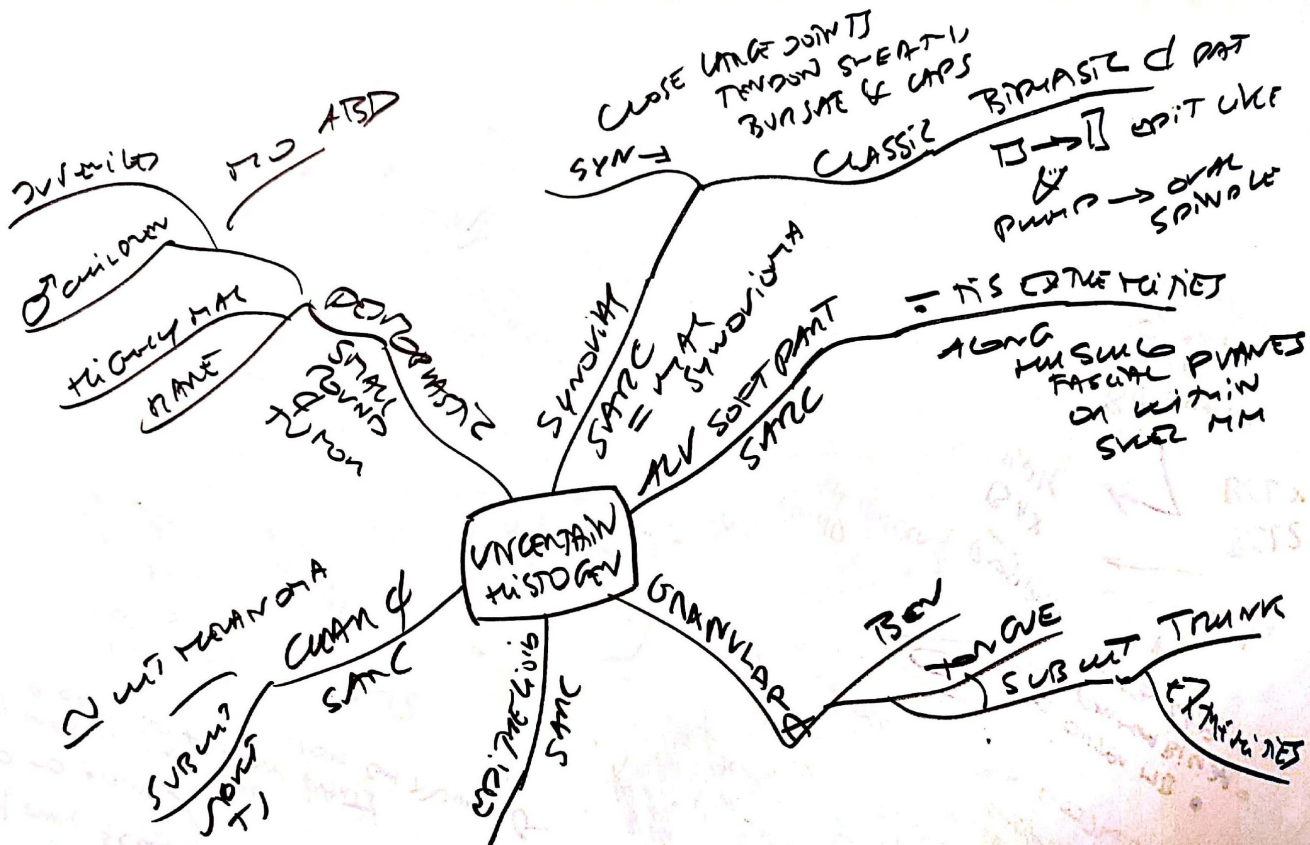
↳ MYOTONIC  
FIGURE



UNIVAC  
&  
NUCLEI

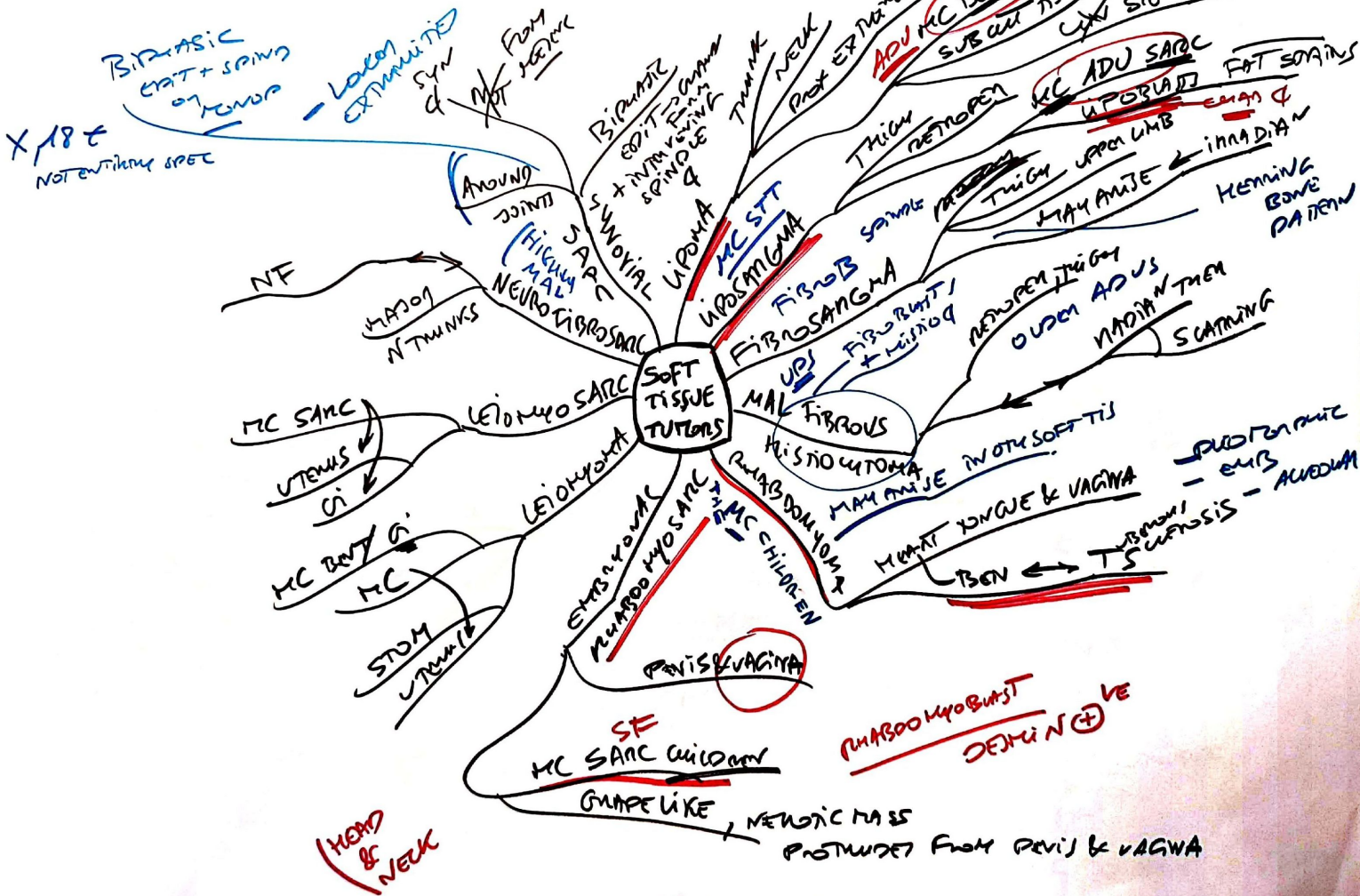








STUDIES 5-100 REVIEW HISTORICAL



PROBABLY ARISE FROM PLURIPOT  
 LES SC  
 RATHER THAN MATURE

EXISTENCE OF LYMPH HEMATOID SARCOMA PRESENCE  
 CANS. RECAPITULATE MATURE  
 NON-NORMAL COUNTING

